

SONATA
OTTAVA

à doi,

Violino e Viola da Gamba,

di

Giouanni Filippo Kriegher.

Violino.

di Giovanni Filippo Krieger.

Allegro.

S Onata Ottava à 2.

Adagio.

Volte.

Allegro.

The first staff of music begins with a treble clef, a key signature of one flat (B-flat), and a common time signature. It contains a series of rhythmic patterns, including eighth and sixteenth notes, with some slurs and accents. The tempo marking "Allegro." is positioned below the first few notes.

The second staff continues the musical piece with similar rhythmic complexity, featuring slurs and accents over various note values.

The third staff shows further development of the musical theme, maintaining the fast tempo and rhythmic intensity.

The fourth staff continues the melodic and rhythmic progression, with some notes marked with slurs and accents.

The fifth staff features more intricate rhythmic patterns, including sixteenth-note runs.

The sixth staff continues the fast-paced musical texture.

The seventh staff shows a continuation of the rhythmic motifs, with some notes marked with slurs and accents.

The eighth staff continues the musical development, maintaining the fast tempo.

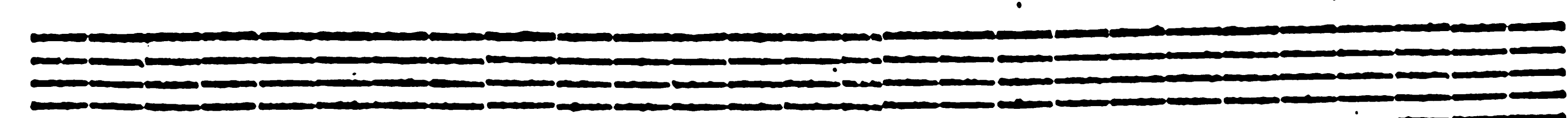
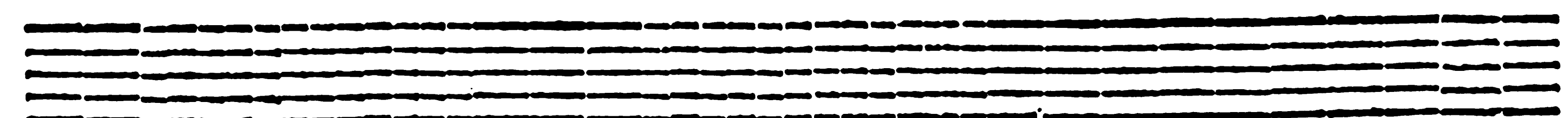
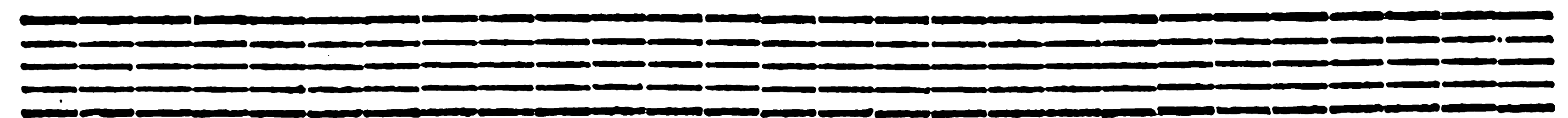
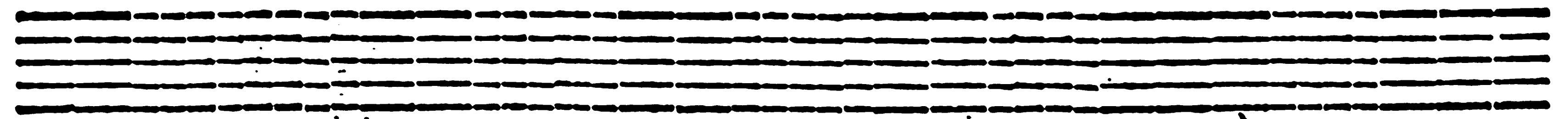
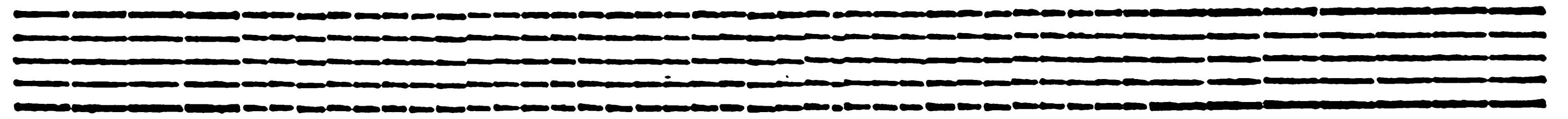
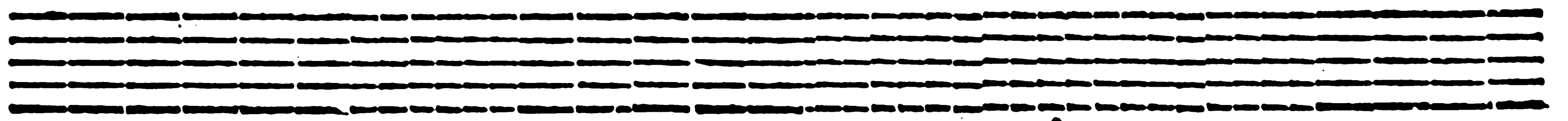
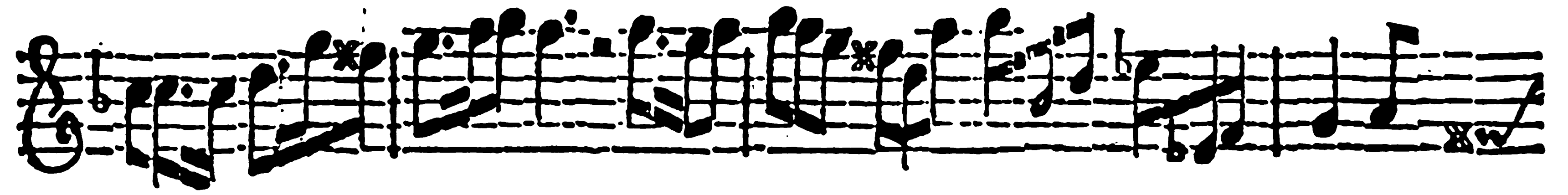
The ninth staff features more complex rhythmic patterns, including slurs and accents.

The tenth staff includes a change in tempo and meter, marked by a double bar line and the appearance of a 6/8 time signature. The tempo marking "Adagio." is placed below the staff.

Adagio.

Gigue.

The eleventh staff begins the "Gigue" section, characterized by a more rhythmic and dance-like feel, with a key signature of one flat and a common time signature.



Viola da Gamba.

di Giovanni Filippo Kirchgasser.

Allegro.

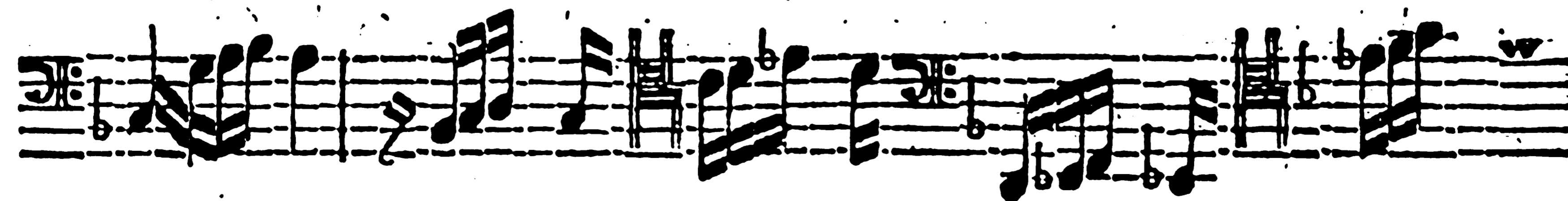
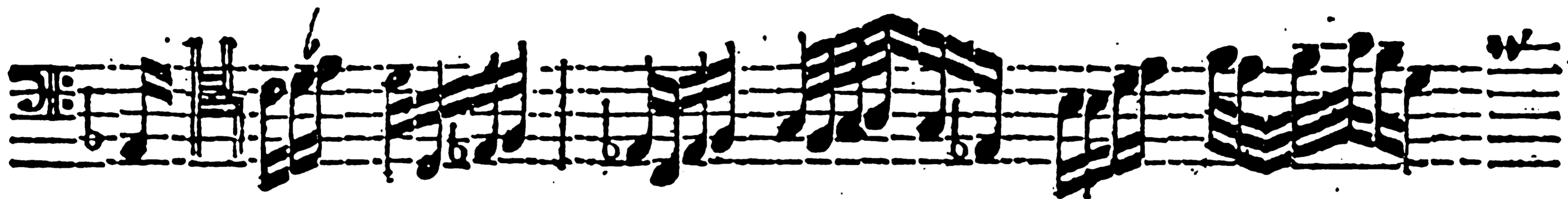
S Onata Ottava à 2.

Adagio.

Volate.



Allegro.



Adagio.

Gigue.

Cembalo.

Allegro.

S Onata Ottava à 2.

6 b 6 5 43 b 56 56

5b6 b

6 6 5 4 6 5 4

6 b 6 5 43 56 56 b

6 5 4 b b

b b 6 5 b b

b 4 56 56 4b3 5 43 6 5 4b3 6 5 43 43 98

Adagio.

765 6 4 765 6 b 6 b6 6

Allegro.

b 6 6 b6 6 6 b6 6 6 b 6 6

6 4 6 6 6 6 b b6 6 6 5 43 6 b b6 6

First musical staff with notes and fingerings: b 6, 6, 6, 76, b, 6, 6, b, b6, 6, 6, 6.

Second musical staff with notes and fingerings: b, b 6, 6, b 6, 6b5, 6, b, 6.

Third musical staff with notes and fingerings: 56, 4, 4, 6. Includes the tempo marking "Adagio." and the section heading "Gigue." with a star symbol.

Fourth musical staff with notes and fingerings: 3, b, 6, 6, 6, 6, 6.

Fifth musical staff with notes and fingerings: 6, 6, 66, 66, 6, 6, 76, 6.

Sixth musical staff with notes and fingerings: 6, 6, b6, 6, 6, 6, 6, 4, 3.

Seventh musical staff with notes and fingerings: 56, 6, 6, 6, 6, b, 6, 6, 6.

Eighth musical staff with notes and fingerings: 6, 4, b, 6, 6, 6, 6, 4, 6. Ends with a double bar line and a decorative flourish.

